



Society for Social Medicine

Advancing knowledge for population health

The Early Careers Researchers Section



Find out what the ECRs are up to during the conference by following us on
Twitter: [@ECR_SSM](https://twitter.com/ECR_SSM)



Check out the SSM ECR Facebook page: www.facebook.com/SocSocMed



Feel free to email us at any time at: ecr.ssm@gmail.com



Society for Social Medicine

Advancing knowledge for population health

SSM ECR Subcommittee 2015: Who we are



Dorina Cadar
Chair



Sara Ronzi
Chair-elect



Sadie Boniface



Sarah Gibney



Hayley Denison



Rebecca Lacey



Kathryn Oliver



Snehal Pereira



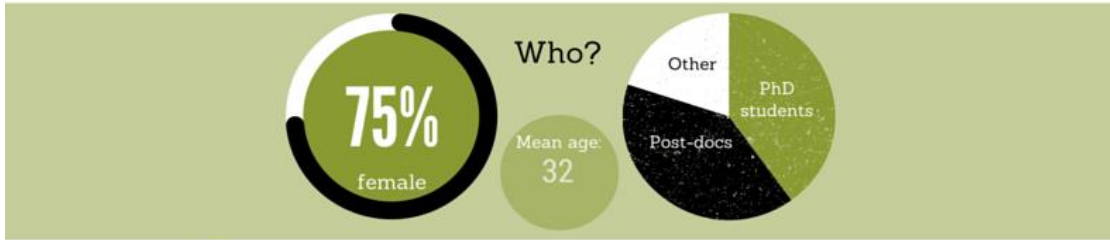
Melanie Rimmer



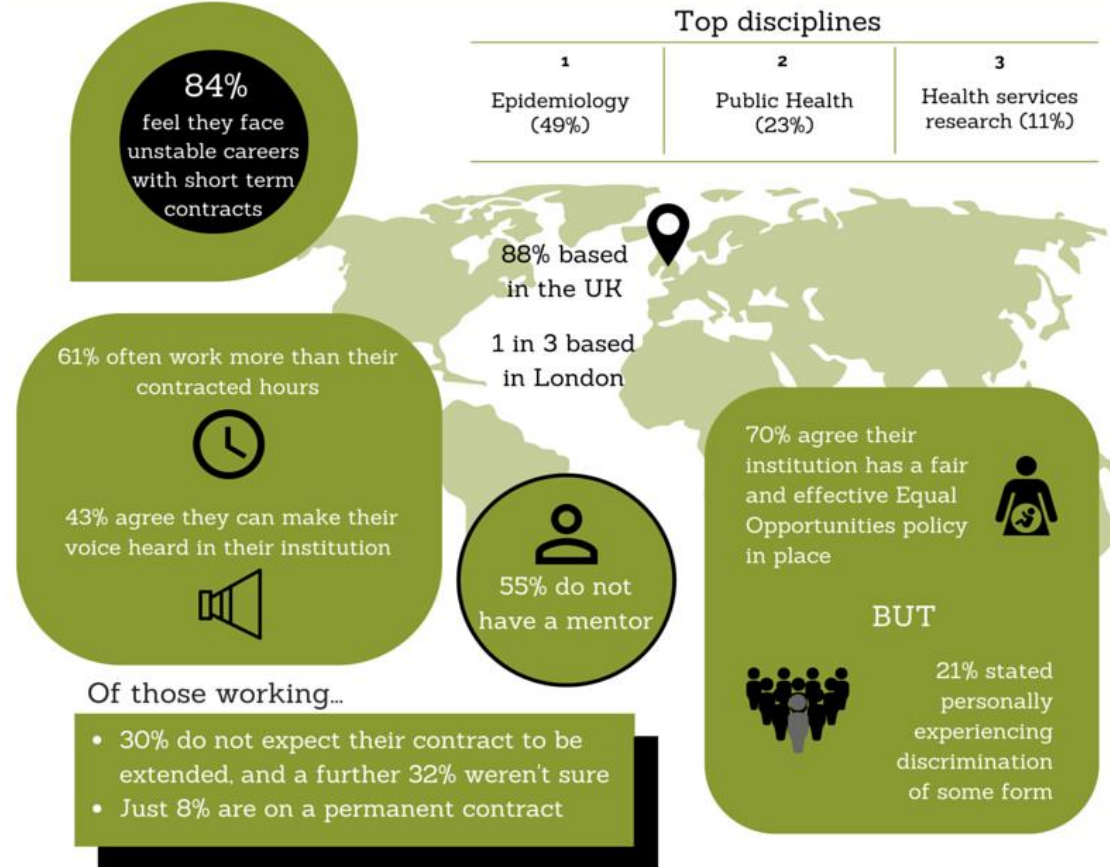
Society for Social Medicine

Advancing knowledge for population health

65 members completed the first SSM ECR survey in early 2015.



SSM ECR Survey findings clustered around three main themes:



Job instability

Limited opportunities to develop an academic career

Lack of mentoring





Society for Social Medicine

Advancing knowledge for population health

Points of discussion

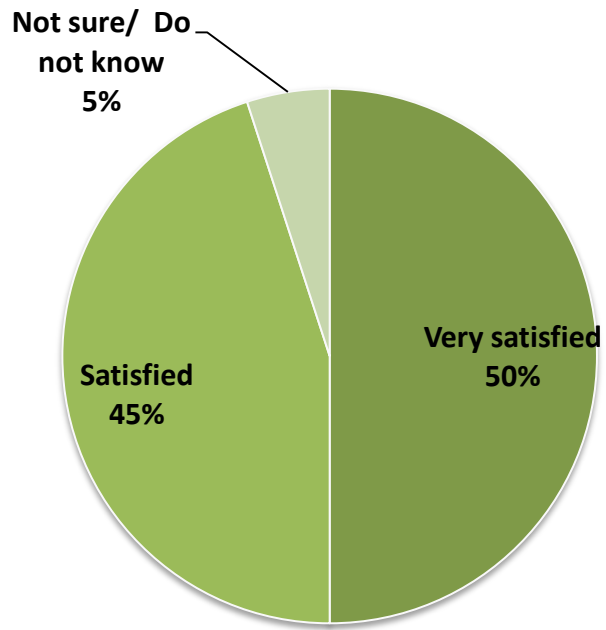
- **ECR challenges**
- **ECR SSM Network Platform – Research topics groups**
- **Mentoring**





Mentoring

Mentee satisfaction with SSM Pilot Mentoring Scheme





Society for Social Medicine

Advancing knowledge for population health

I needed....



Mentoring





Society for Social Medicine

Advancing knowledge for population health

What we offer to the ECRs

- **One year free membership**
- **ECR-tailored events at the ASM**
- **Gig trail and job related emails**
- **Mentoring scheme by more senior academics in population health**